



**TAGGART**  
— M O D U L A R —



# Taggart Modular

Taggart Modular is the modular construction division of Taggart Homes. Taggart Homes was formed in Derry, Northern Ireland in 1989 by two brothers, Michael and John Taggart and it remains a family run company to this day. Over the years it has built over 5 million sq foot of high-quality housing across the UK and Ireland. It is with this experience that Taggart Modular delivers the highest quality modular projects.

To this day, its three overriding principals remain:

- Quality** – the constant push for perfection in our people, our suppliers and our products and in being innovative with emerging construction methods and materials.
- Integrity** – dedication to being an innovator in the industry and in doing the right thing for the right reasons.
- Value** – harnessing our bulk purchasing power and innovating supply chains to enable us to increase quality whilst lowering costs to deliver greater value to our customers.





Due to the rising pressure for housing, Taggart Modular have developed this innovative and affordable solution for accommodation that is suitable for all types of use.

All units meet exceptional standards of fabrication – factory assembled using high degrees of accuracy and ensuring a very well insulated, low-energy and low-running cost accommodation.

These modular units have been designed using local materials and local labour, and have reduced the use of plastic throughout – where feasible, with a focus on natural and renewable or recyclable materials.

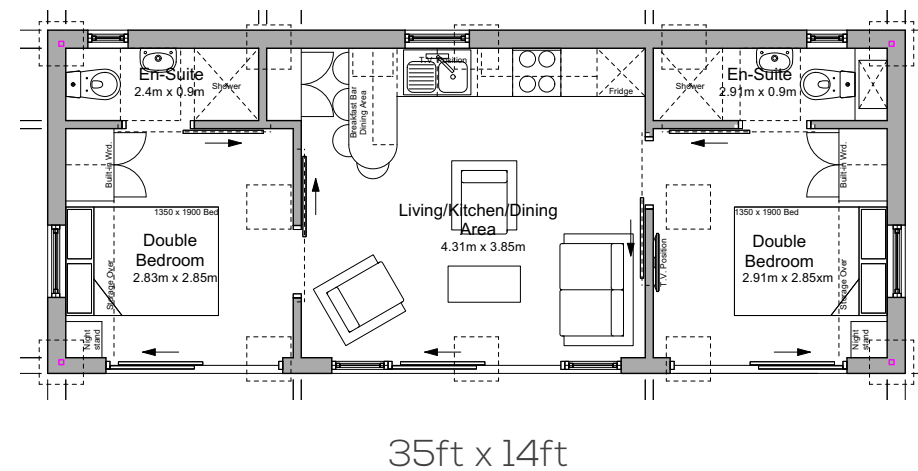
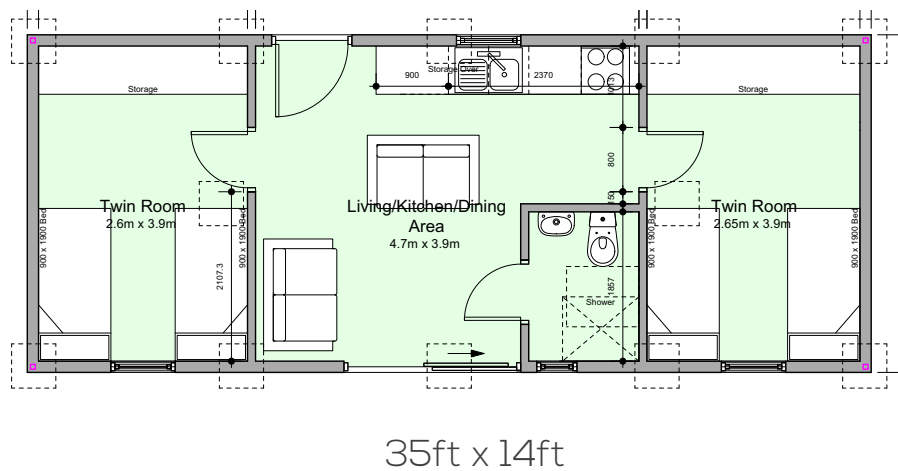
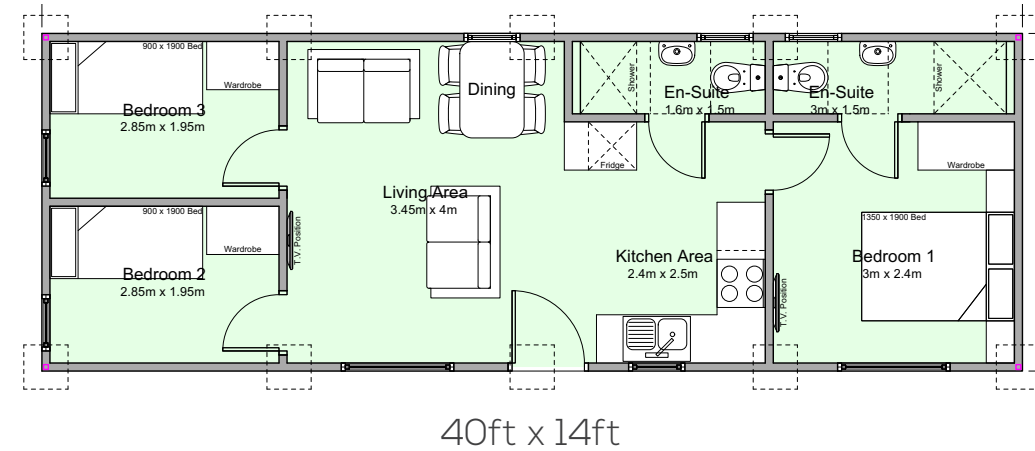
They are delivered complete with a turnkey finish, and can be relocated, added to, or moved with relative ease.





# Example Layouts

Modular Specification
<b>Exterior:</b>
Four exterior lights
Steel frame
Metal or timber cladding options available
Double glazed windows and doors
<b>Interior:</b>
Insulated ceiling, walls and floor
Electrics finished and certified
Full interior electrical package
Kitchen with units, hob, oven and fridge
Painted interior walls and ceilings
Full turnkey finish



“  
Space is an inspirational concept  
that allows you to dream big.  
”

– Peter Diamonds

For more information on layouts  
and specification, visit us at  
[www.taggartmodular.com](http://www.taggartmodular.com)





# Shepherds Bar

Available for Hire. Please contact for details

## Shepherds Bar Specification

### Exterior:

Exterior lighting

Steel frame and chassis

Corrugated tin on walls & roof

Double glazed windows and door

Decking space for guests provided

### Interior:

Fully insulated ceiling, walls and floor

Electrics finished and certified

Herringbone wooden floor

Fully functioning bar fitted including taps, optics, fridge, freezer

Fully furnished with fixtures and fittings

Wood burning Stove



Interior View



“

Nature is the greatest place  
to heal & recharge

”





# Shepherds Hut

Originally, Shepherd's Huts provided a shepherd with welcome shelter from unpredictable weather - as well as offering them a place to rest their head and escape from the elements during the lambing season, which would typically take place during the colder winter months. Historians have traced shepherd's huts back to 1596, where an early text reads 'the shepherd hath his cabin going upon a wheel for to move here and there at his pleasure'.

As with most things, methods slowly changed and large covered buildings allowed the flock to be housed close to the farm. By the 1950's many huts had either been pushed into a nearby wood or field corner, or repurposed as store rooms.

The increased demand in the already thriving staycation and glamping industry in recent years has led to an exponential revival of shepherd's huts as their popularity continues to grow. Glamping is the perfect blend of outdoor adventure and comfort. For many it is appealing to stay in amazing spaces where you can enjoy being amongst nature but still enjoy the comforts of home. It's one of the most restorative, exciting and inspiring ways to holiday. Shepherd's huts provide the perfect home away from home, which is the ideal glamping experience - they're solid, well insulated and provide space for all your needs.

The Shepherds Huts stay true to their original features, including having fully functioning wheels. This allows them to be moved short distances with minimal hassle, allowing you to easily move them from one spot to the next should you ever need to.



Shepherds Hut  
20ft x 10ft, Open Plan





Shepherds Hut  
24ft x 13ft, Two Bedroom



Shepherds Hut  
Cream Finish Available  
(Cement Fibre Board)



# Interior Views



Shepherds Hut Specification
<b>Exterior:</b>
Three exterior lights, two at the front, one at the rear
Steel frame and chassis
Corrugated tin on walls & roof (cement fibre board cladding available)
Double glazed windows and door
<b>Interior:</b>
Fully insulated ceiling, walls and floor
Electrics finished and certified
Four double sockets and two bedside lights
TV point
s Electric tove
Instant hot water
Kitchen with units, hob, oven and fridge.
Separate shower room - Electric 9.5 kw .900cm x 1m fully tiled
Sink with vanity unit and WC
Laminate floor
Provision for double bed with storage underneath
Bunk bed with ladder
Painted interior walls and ceilings

# Layouts



Option 1  
20 x 10ft



Option 2  
20 x 10ft



Two Bedroom  
24ft x 13ft





Taggart Modular concepts are designed, created and fitted by renowned builders Taggart Homes. They have a wealth of knowledge and experience on the value of space and are currently building home developments in Northern Ireland and the UK. Their quality finish, luxury ethos carries through into Taggart Shepherds Huts offering you the highest standard in the additional space that you need.

At Taggart Modular, we believe in creating unique spaces no matter the environment or purpose. Our garden rooms have already been designed for use as offices; salons; gyms; games rooms; bars; and full living accommodation. One of the many great things about these spaces, is the steel frame, ensuring the rooms can be transported as they are, in one piece. This means that a fully fitted out room can be moved to a different location far or near, with ease.







## Contact Us

We would love to hear from you. If you have any questions or queries please contact us on the below details.  
Please note that all viewings for the Shepherds Huts are by appointment only.

Republic of Ireland: Jackie 083 208 1397  
N. Ireland and UK: Grainne 073 4120 0100

T: 028 7127 7900  
E: [sales@taggartmodular.com](mailto:sales@taggartmodular.com)  
[www.taggartmodular.com](http://www.taggartmodular.com)